



Hard Chess Puzzle # 0132

By

G Bud Games
<https://gbud.in>

February 9, 2022

Contents

Hard Chess puzzle # 0132 - Mate in 3 moves	3
Hard chess puzzle 0132	3
Solution to hard chess puzzle 0132	4
Solution 1	4
Right moves for the solution to the hard chess puzzle 0132	7
Explanation for the moves	7
Categories of hard chess puzzle 0132	8
hard chess puzzle 0132 chart	8
How to view the solution to hard chess puzzle 0132	10
How to get help for moves in the hard chess puzzle 0132	11
Play chess for free	12

List of Figures

1	Solve this hard chess puzzle 0132. Mate in 3 moves @ https://gbud.in/gdf3r63	3
2	Solve this hard chess puzzle online with solution @ https://gbud.in/gdf3r63	3
3	Initial board position of hard chess puzzle 0132	4
4	Bc5+	5
5	Re3	5
6	Bxe3+	6
7	Kh2	6
8	Nf3#	7
9	hard chess puzzle 132 chart 1	8
10	hard chess puzzle 132 chart 2	9
11	hard chess puzzle 132 chart 3	9
12	hard chess puzzle 132 chart 4	10
13	Click the solution button to view solutions @ https://gbud.in/gdf3r63	10
14	Click the help button to get help on next move @ https://gbud.in/gdf3r63	11
15	Solve more hard puzzles @ https://gbud.in/chshdpz	11
16	Solve other puzzles @ https://gbud.in/chsgppz	11
17	Play chess online for free. Solve puzzles and play with friends	12
18	Solve this puzzle online by scanning this QR code or go to the link below	13

Hard Chess puzzle # 0132 - Mate in 3 moves

Solve this hard chess puzzle and improve your chess games through improvement of your chess strategies and chess tactics. This hard puzzle is a subset of [kids games](#).

Puzzle No : 0132

Difficulty level : hard

Description : Mate in 3 moves

Next Move : Black

Player level : Advanced

Short URL for puzzle : <https://gbud.in/gdf3r63>

Hard chess puzzle 0132

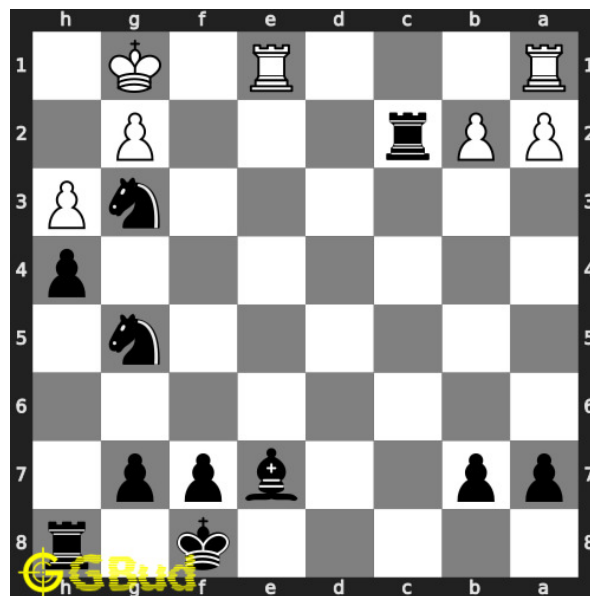


Figure 1: Solve this hard chess puzzle 0132. Mate in 3 moves @ <https://gbud.in/gdf3r63>



Figure 2: Solve this hard chess puzzle online with solution @ <https://gbud.in/gdf3r63>

Dont forget to check out [chess puzzles](#), [easy chess puzzles](#), [medium chess puzzles](#), [hard chess puzzles](#) and [chess puzzles collections](#) .

Solution to hard chess puzzle 0132

At this puzzle, next [move](#) is by [Black](#). The objective of the puzzle is to mate in 3 moves.

See the interactive solution at the [puzzle page](#)

Solution 1

Initial board position This is the initial board position of hard chess puzzle 0132.

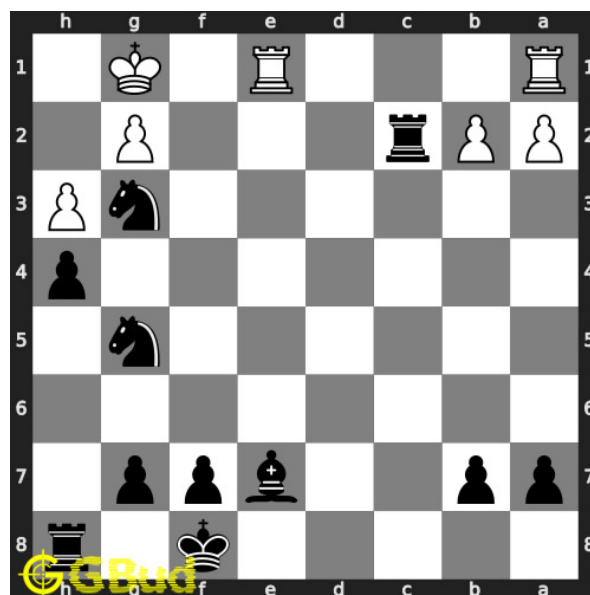


Figure 3: Initial board position of hard chess puzzle 0132

Move 1 Move by black

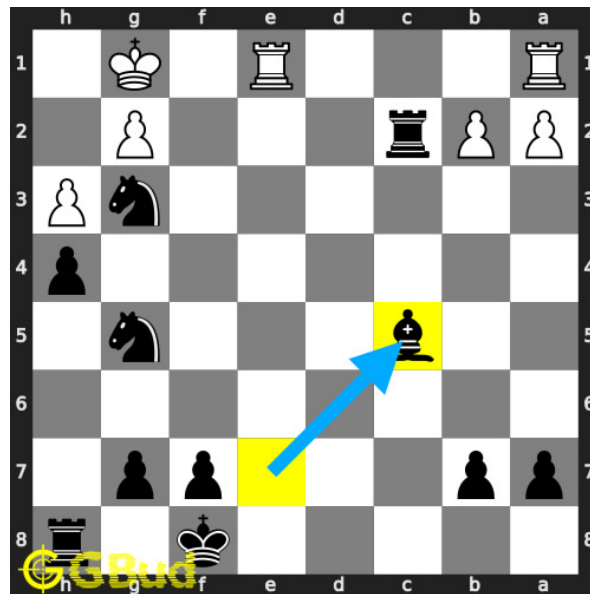


Figure 4: Bc5+

your **bishop** moves to **c5** and gives **check**.

Move 2 Move by white

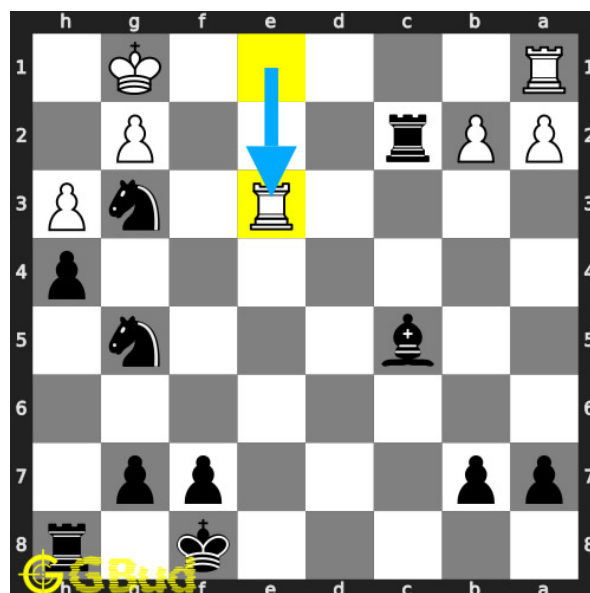


Figure 5: Re3

opponent's **rook** move to **e3** to block the **check** threat.

Move 3 Move by black

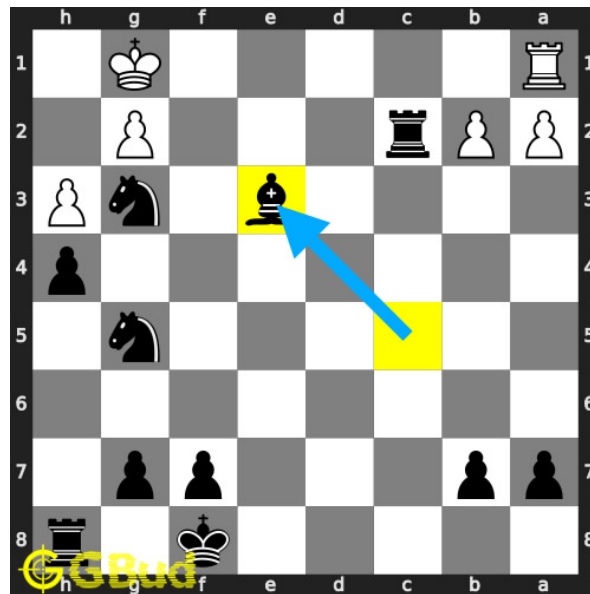


Figure 6: Bxe3+

your **bishop captures** opponents **rook** and gives **check** again.

Move 4 Move by white

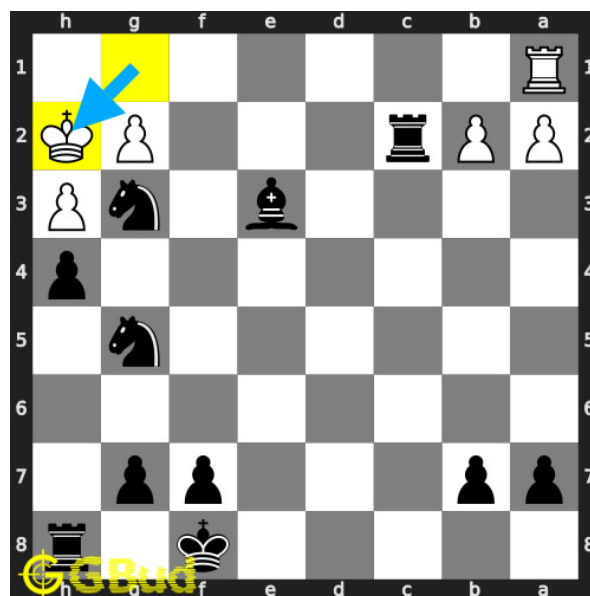


Figure 7: Kh2

opponent's **king moves** to **h2** as this is the only legal **move** available.

Move 5 Move by black

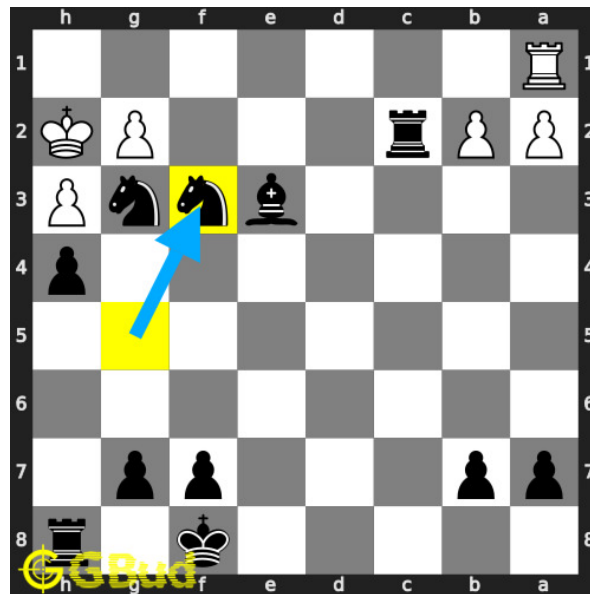


Figure 8: Nf3#

your another knight moves to f3 and checkmate. the pawn at g2 can't capture your knight since it is pinned to their king by your rook. this is how you can mate in 3 moves.

Right moves for the solution to the hard chess puzzle 0132

Based on the objective of the puzzle, you have to make the right moves. Following are the right moves

1. Bc5+, Bxe3+, Nf3#

Explanation for the moves

1. Bc5+ - Your bishop moves to c5 and gives check.
2. Re3 - Opponent's rook move to e3 to block the check threat.
3. Bxe3+ - Your bishop captures opponents rook and gives check again.
4. Kh2 - Opponent's king moves to h2 as this is the only legal move available.
5. Nf3# - Your another knight moves to f3 and checkmate. The pawn at g2 can't capture your knight since it is pinned to their king by your rook. This is how you can mate in 3 moves.
6. For right move - You know how to use the pin at the end of the game. Keep up the good work
7. For wrong move - You could have used your bishop and knight to have a mate in 3 moves. Try again

Categories of hard chess puzzle 0132

This hard chess puzzle falls in these categories.

1. [Hard chess puzzles](#)
2. [Mate in 3 puzzles in chess](#)
3. [Endgame puzzles in chess](#)
4. [Strategy puzzles in chess](#)
5. [Pin puzzles in chess](#)
6. [Knight puzzles in chess](#)
7. [Bishop puzzles in chess](#)

hard chess puzzle 0132 chart



Figure 9: hard chess puzzle 132 chart 1



Figure 10: hard chess puzzle 132 chart 2



Figure 11: hard chess puzzle 132 chart 3

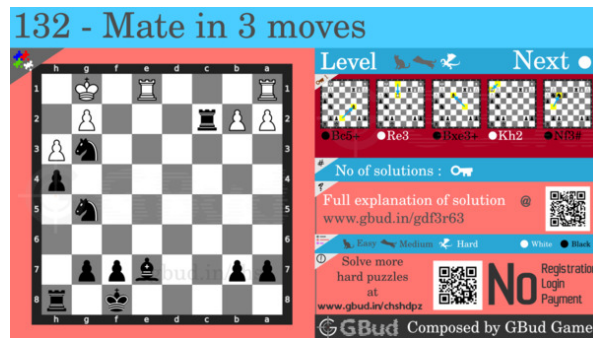


Figure 12: hard chess puzzle 132 chart 4

How to view the solution to hard chess puzzle 0132

To view the [solution to this puzzle](https://gbud.in/blog/game/chess/hard-chess-puzzles/hard-chess-puzzle-0132.html), follow the steps given below

1. Go to the [puzzle page](https://gbud.in/blog/game/chess/hard-chess-puzzles/hard-chess-puzzle-0132.html)
2. Click the solution button (Key as shown [below](#)) to view the solution



Figure 13: Click the solution button to view solutions @ <https://gbud.in/gdf3r63>

How to get help for moves in the hard chess puzzle 0132

To get help or the possible next moves in the puzzle, , follow the steps given below

1. Go to the [puzzle page](#)
2. Click the help button (exclamation mark as shown [below](#)) to get help or suggestion on next possible [move](#)



Figure 14: Click the help button to get help on next move @ <https://gbud.in/gdf3r63>



Figure 15: Solve more hard puzzles @ <https://gbud.in/chshdpz>



Figure 16: Solve other puzzles @ <https://gbud.in/chsgppz>

Play chess for free

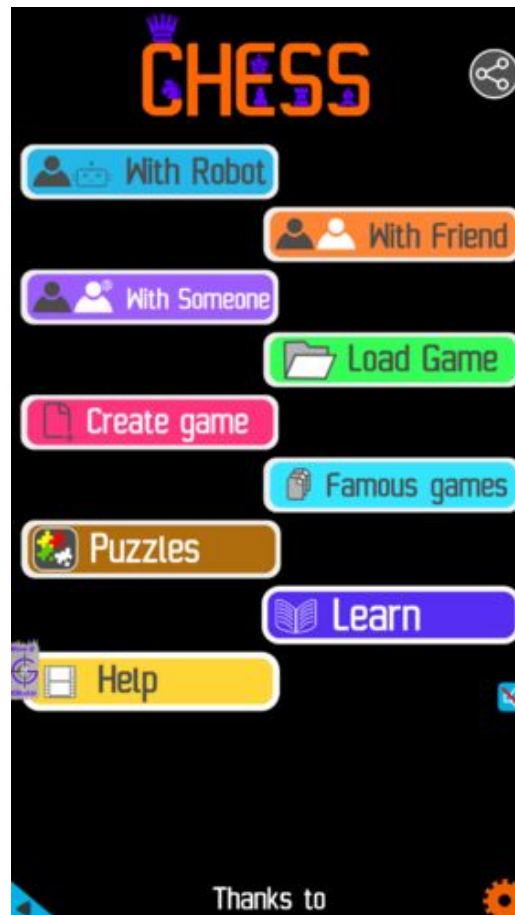


Figure 17: Play chess online for free. Solve puzzles and play with friends

Play chess for free at <https://gbud.in/chs>

We present you a platform to play chess online with friends for free. No need to install any app. You can play chess for free without registration or login.

Simple. You can do several chess related activities.

1. [solve chess puzzles](#)
2. [learn about chess](#)
3. [play chess with computer](#)
4. [play chess with friend](#)
5. [create your own chess games](#)

6. [fen viewer](#)
7. [fen editor](#)
8. [fen generator](#)
9. [pgn viewer](#)
10. [chess board editor](#)
11. [view famous chess games.](#)



Figure 18: Solve this puzzle online by scanning this QR code or go to the link below

<https://gbud.in/gdf3r63>

Read the latest article on Hard Chess puzzle # 0132 - Mate in 3 moves by scanning this QR code or click the link

Previous article : « [Hard Chess puzzle # 0131 - Mate in 2 moves](#)

Next article : [Hard chess puzzles](#) »

[Back to top](#)

[Contact Us](#)